



POWERFUL RF SYSTEM FOR PROFESSIONAL USE  
FOR FACE LIFTING & BODY CONTOURING & HAIR LOSS CARE & PHYSIOTHERAPY

## TECHNICAL SPECIFICATION

Name of product	SINESON	Model number	SNE-7100
Rated Voltage	100~250VAC, 50/60Hz	Output Frequency	470KHz
Output Power	300W	Dimensions	W415 x L350 x H200 (mm)
Screen	7" Touch screen	Weight	5.3Kg (Main body only)

## ACCESSORY

### BASIC

1 For each

CET : 20mm, 30mm, 40mm, 60mm, 80mm / RET : 30mm, 60mm, 80mm / Bipolar : 45mm  
H/P : RET, CET / Bipolar cable / Patient bar / Y Shape connector(for 2 Patient plates)

2 For each

Patient plates

### OPTION

Y Shape connector(for both hands) : for CET 1pcs, for RET 1 pcs  
H/P : CET, RET  
RET 60mm / CET 60mm / Electrode cover for RET 60mm

*Faster, Stronger, Deeper!*

## Powerful 300W Optimal Radio Frequency system

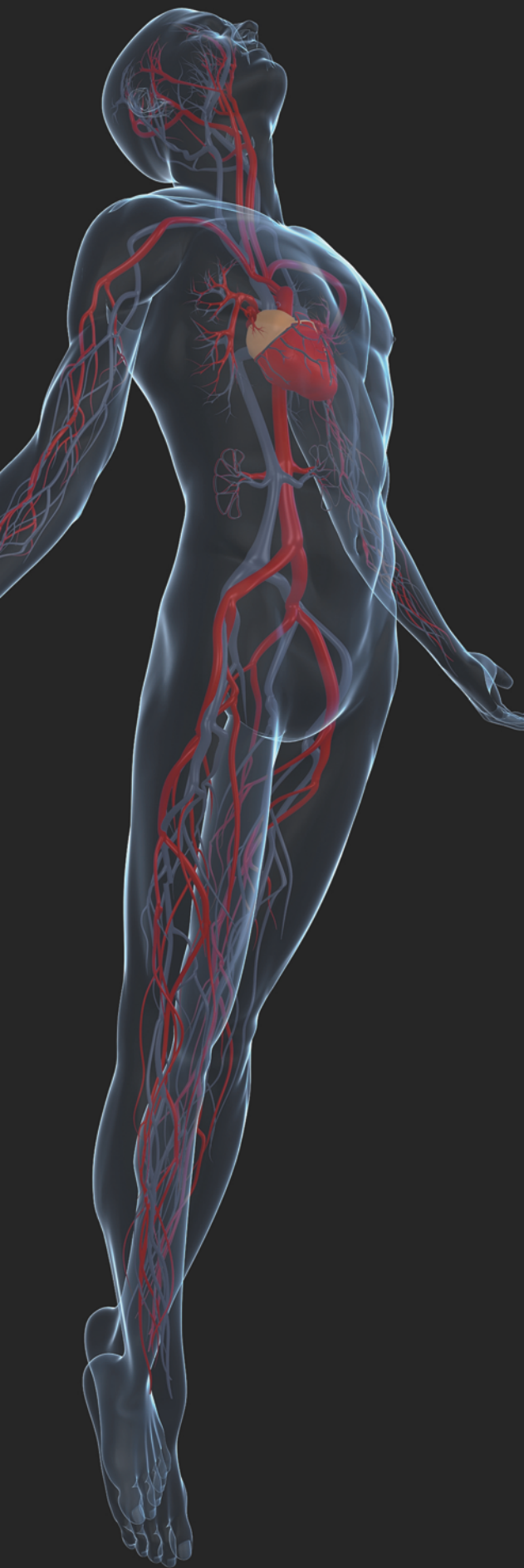
- Ideal 470KHZ Freq.
- Technology Intensive RF Device
- Spark Free
- CET, RET & Bipolar for face & body



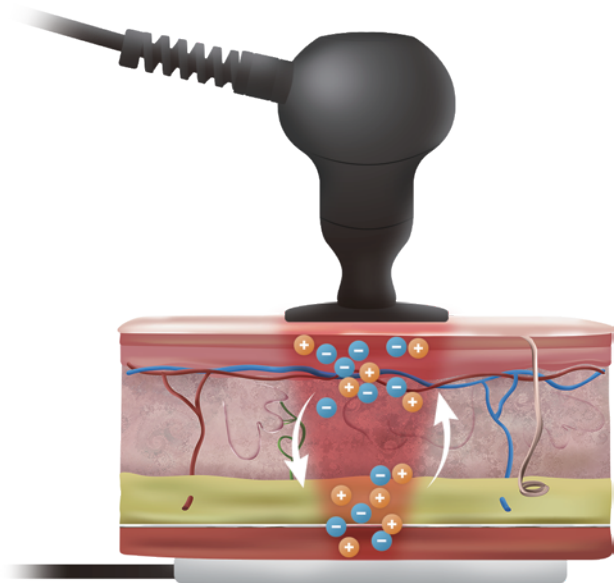
Rm.201, Woolim e-biz center II, 12, Digital-ro 33-gil, Guro-gu, Seoul, Korea [08377]  
TEL. +82 2 866 0657 FAX. +82 2 866 0658 URL. [www.k1medglobal.com](http://www.k1medglobal.com) E-MAIL. [k1@k1medglobal.com](mailto:k1@k1medglobal.com)



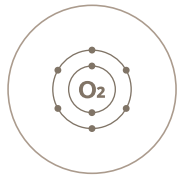
# SINESON EFFECTS



## BIOLOGICAL EFFECT FLOW



- Electron Activity 470,000 time/sec
- Increasing core body temperature up as much 5°C~7°C
- Expansion of artery and capillary
- Increasing blood flow rate as 4~5times



Increase in  
O<sub>2</sub> supply



Increase in  
Nutrition supply



Stimulation of  
Immune system



Increase in  
Metabolism



Removal of  
Waste material

## HEALTHY, ELASTICITY BODY AND FACE LOOKS GREAT!

### BODY CONTOURING

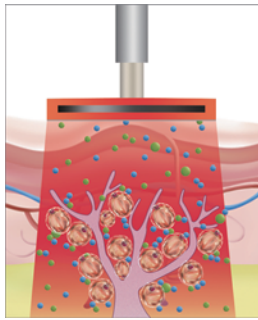
FAT Melting & Burning(Visceral Fat, Subcutaneous fat), Remove toxin

- Soften Skin texture, Lifting effect all over face and body, Elasticity effect  
- Damage old collagen and accelerate neo collagen generation
- Soften soft tissue with CET and Hard tissue with RET  
- Muscle, Joint, Ligament, Bones, Lymph

## CET MONOPOLAR & RET MONOPOLAR & BIPOLAR CARE

### CET

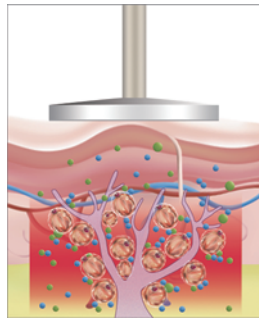
Monopolar care



Face care/ Hair loss care/  
subcutaneous fat care etc.

### RET

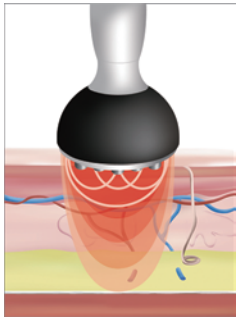
Monopolar care



For Back pain/ Visceral fat/  
Subcutaneous fat/  
Cellulite care etc.

### Bipolar care

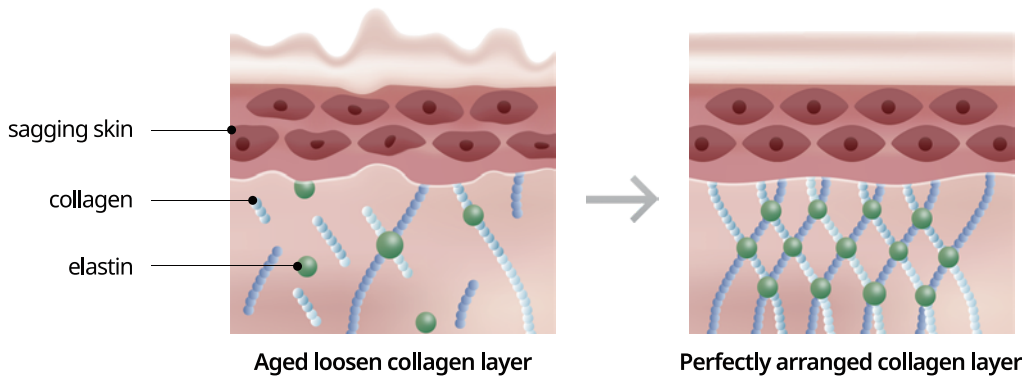
Bipolar care



Face lifting/  
Wrinkle care/ Dark circle/  
Sensitive skin care/  
Melasma care/ eye care etc.

## RADIO FREQUENCY DIATHERMY

Radio Frequency diathermy activates collagen and elastin regeneration.  
It melts and burns fat for body contouring and relax muscle for pain relief.



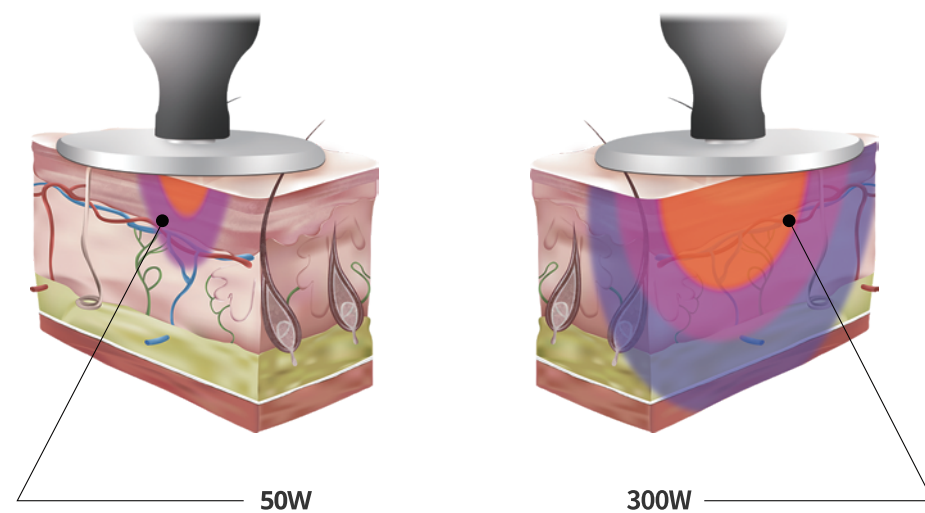


# SINESON STRENGTH

## POWERFUL OUTPUT POWER 300 W (MAX.)

Stable and powerful RF output power from technology-intensive **300W output board (Max.)** with **HIGH POWER GENERATOR**.

This stable high output power enables safe and competent treatment even for big size electrode and high impedance person. There is no sudden temperature drop and no damage on power generator. Heat generating is much faster, stronger and deeper than general lower power RF devices.



**RET Electrode** Special calming and muscle relaxation effect with RF heat through operator's hand



## IDEAL 470KHZ FREQUENCY

Clinical document proven frequency for collagen regeneration effect.  
It is the frequency to give prompt lifting effect as well as long lasting effect.

## SPARK FREE

Installing spark detecting system in the board, it guarantees spark free safe treatment.



## DOUBLE TREATMENT AT THE SAME TIME



Time saving treatment with synergy effects.

**2 RET 60mm electrodes or CET 60mm can be installed  
2 handles using.**

2 Handles enable double treatments on two local areas at the same time.  
It helps to reduce treatment time and thermal losses.

\*Especially recommend for wide area treatment ex.)Sides, Abdomen, back and so on.





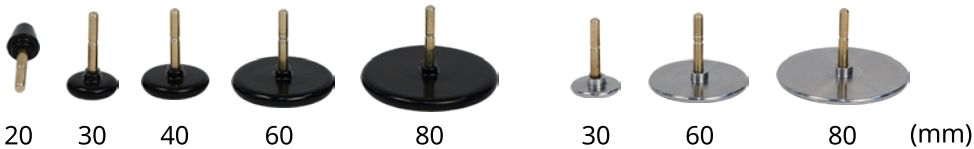
# PREMIUM RF SINESON CARE

- **User friendly interface with 7 Inch Color Touch Screen Impedance monitoring.**  
Modern and convenient U.I. (User Interface) and color LCD.  
Specially designed LCD is fully protected from possible problems caused by RF noise.



- Optimized design and size for RF treatment**  
Operator contact their fingers with treatment area

- 8 kinds of CET and RET electrodes**  
To treat all areas with various electrode size Like 5 different size CET and 3 different size RET



- Convenient Patient Bar (\*Option)**  
For face treatment(recommended to use below 40mm electrodes), client simply grab it instead of patient plat



- Vaginal Probe (\*Option)**  
vaginal elasticity can be improved by 20 minutes single treatment and expected cushion effect due to recovering the mucous membrane tissue.



- \* RET Cream**  
RET Cream conducts RF heat well and protects skin.  
As containing Bitter orange extract and leaf of eucommia ulmoides extract, protects skin and maximizes RF treatment effects.

- **Face care** wrinkle removing, lifting, soften skin texture, acne, return to normal skin from sensitive skin
- **Pain care** rheumatoid arthritis, pain(back, shoulder...), tennis elbow, ankle pain
- **Body care** fat burning, lifting, cellulite care, stretch mark
- **Hair Loss care** prevent hair loss, hair growth promoting
- **Eye care** eyelid lifting, dark circle, flesh eye

